

For further assistance, please  
visit [Tenovi.com/support](https://tenovi.com/support).

tenovi

© 2025 Tenovi Co.  
All rights reserved. Republication, duplication or modification  
in whole or in part is prohibited without prior written permission  
from Tenovi. All trademarks are owned by or licensed to  
Tenovi, Co. unless otherwise noted.  
Revision 05.01.2024

1

## Power Your Gateway

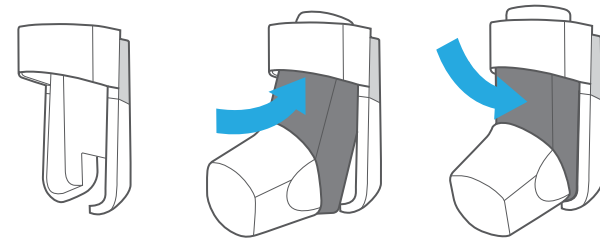
Plug your Gateway into a power outlet with the provided power cord and wait until the LED on the Gateway turns **RED**.



2

## Attach to inhaler

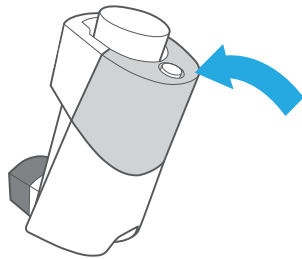
With the door slide open, **push the inhaler up from the bottom, and click into place.**



3

## Bond to Gateway

Press the button three times fairly quickly. The light on the sensor will flash **blue** a few times then **green** to signal it's paired.



5

## Daily measurements

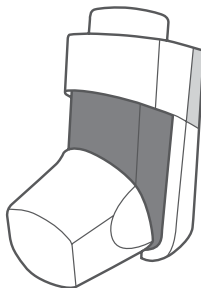
When the measurement concludes, the Gateway will beep and the LED ring will turn **green**, indicating that you have properly taken a measurement, and that measurement was successfully transmitted.



4

## Delivering medication

Refer to the labelling provided with the inhaler for instructions on use. Carry out all steps required to use your inhaler according to the instructions.



adherium

For further assistance, please  
visit [Tenovi.com/support](https://tenovi.com/support).

tenovi