

For further assistance, please
visit [Tenovi.com/support](https://tenovi.com/support).

tenovi

© 2025 Tenovi Co.
All rights reserved. Republication, duplication or modification
in whole or in part is prohibited without prior written permission
from Tenovi. All trademarks are owned by or licensed to
Tenovi, Co. unless otherwise noted.
Revision 05.01.2024

Power Your Gateway

1

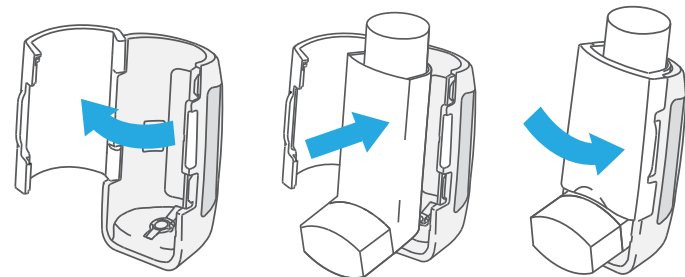
Plug your Gateway into a power outlet with the provided power cord and wait until the LED on the Gateway turns **RED**.



Attach to inhaler

2

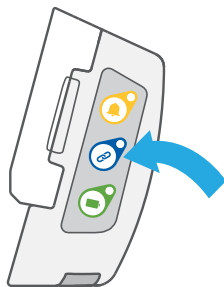
With the door open, push the inhaler inside, click into place, and close the door.



3

Bond to Gateway

Press the **button** with the chain icon three times fairly quickly. The light on the sensor will flash **blue** a few times then **green** to signal it's paired.



5

Daily Measurements

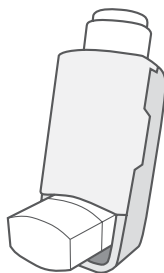
When the measurement concludes, the Gateway will beep and the LED ring will turn **green**, indicating that you have properly taken a measurement, and that measurement was successfully transmitted.



4

Delivering Medication

Refer to the labelling provided with the inhaler for instructions on use. Carry out all steps required to use your inhaler according to the instructions.



adherium

For further assistance, please
visit [Tenovi.com/support](https://www.tenovi.com/support).

tenoví