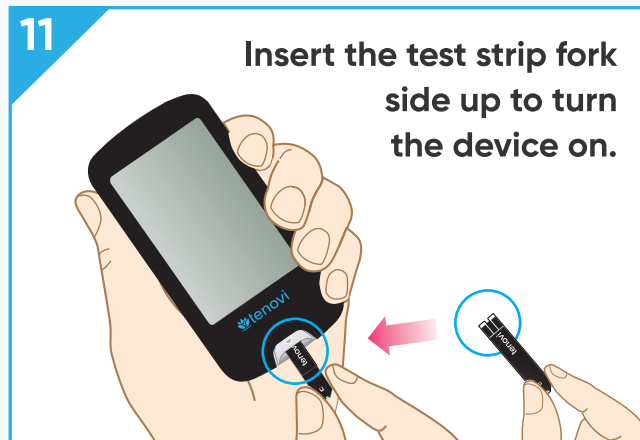
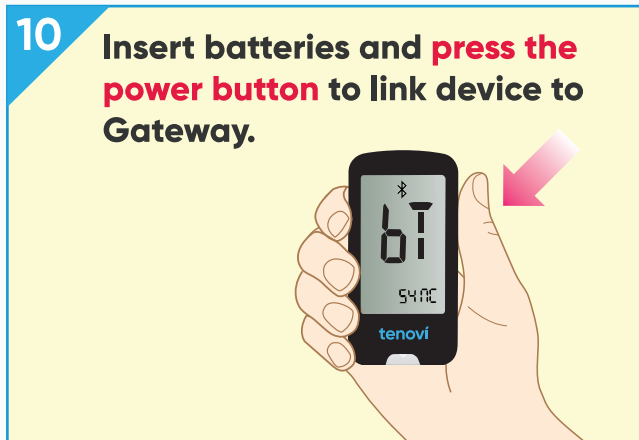
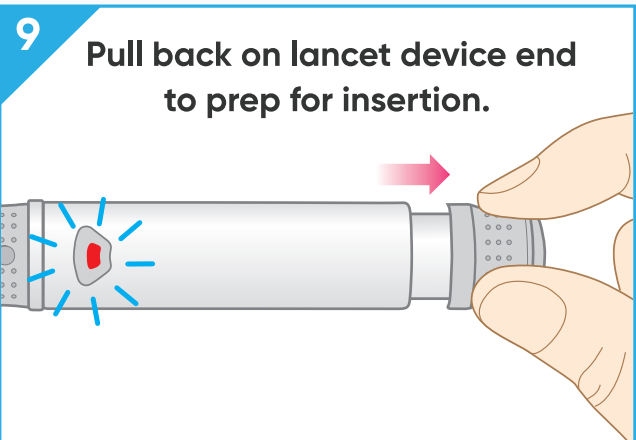
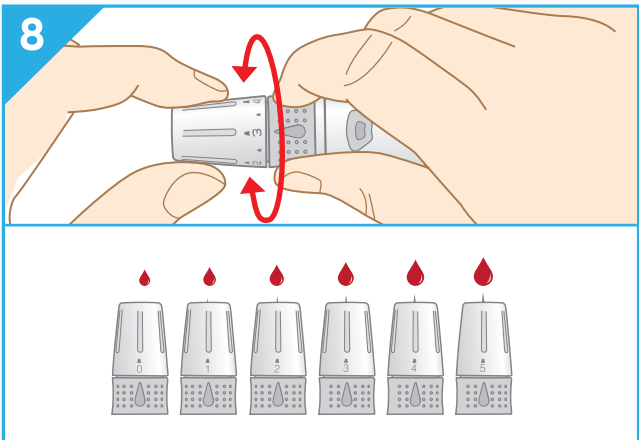
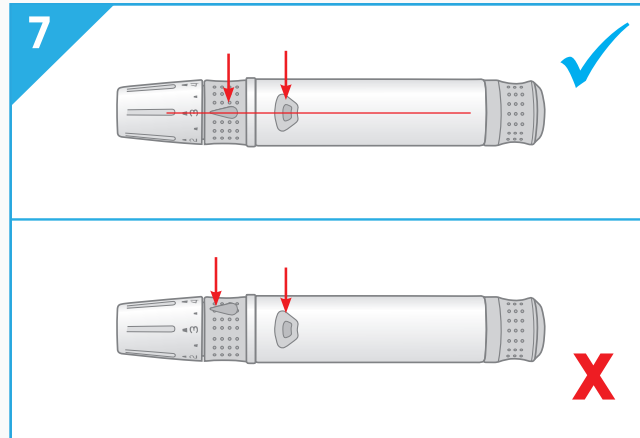
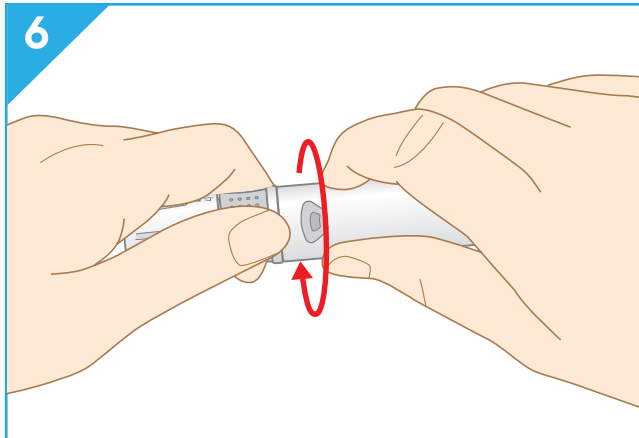
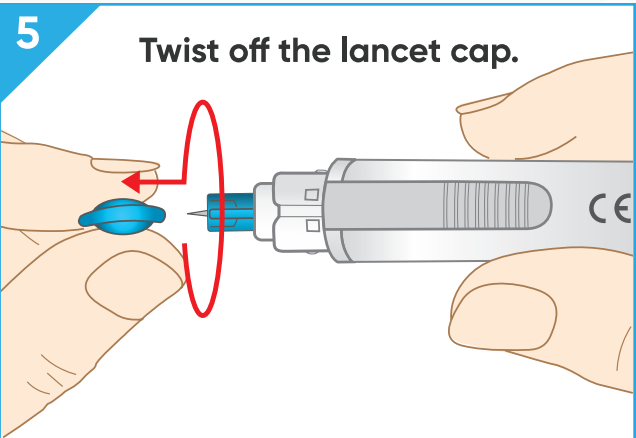
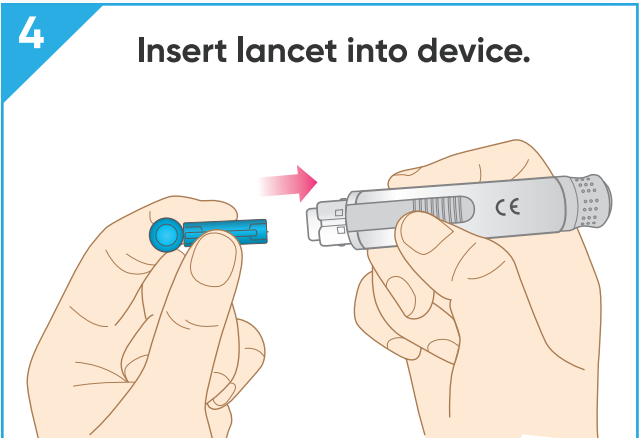
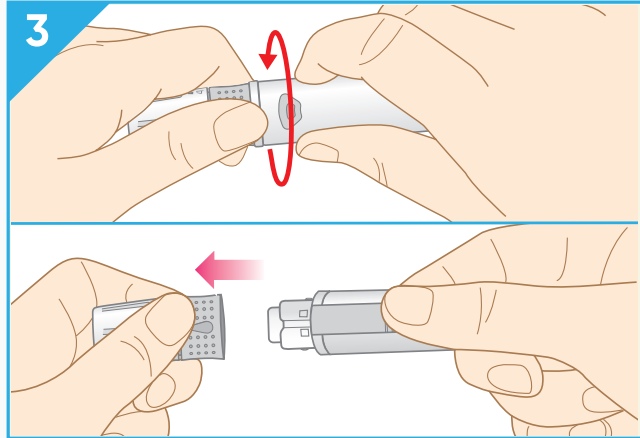
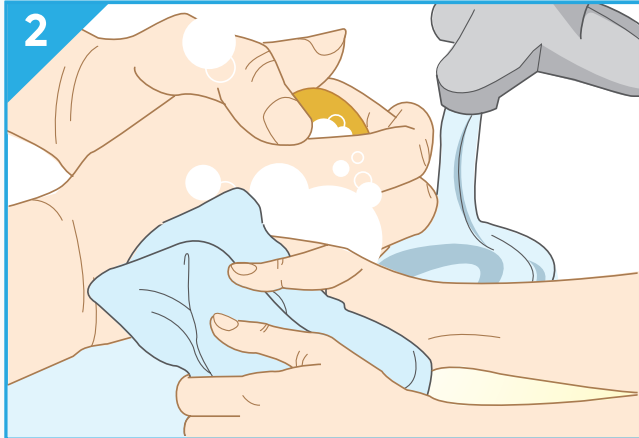
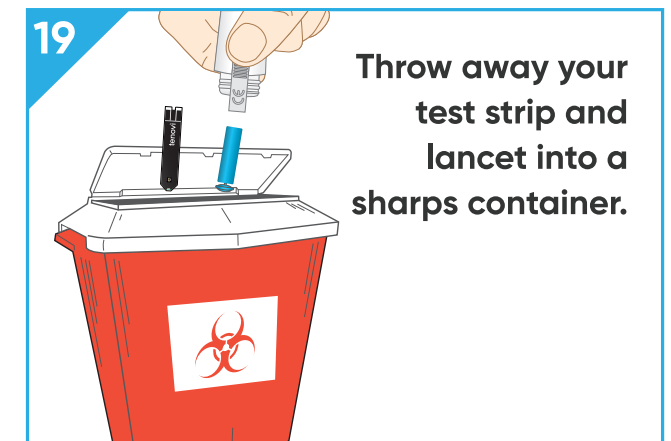
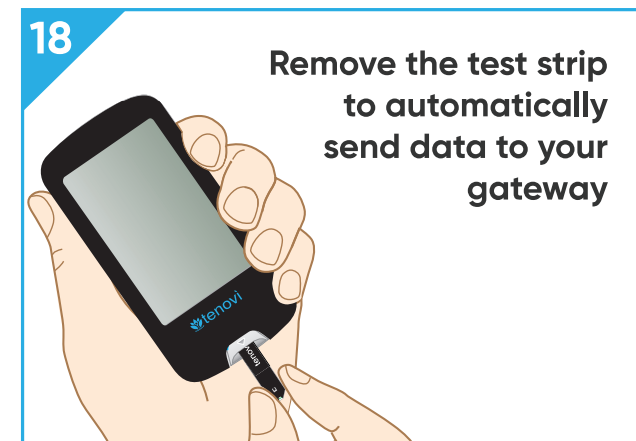
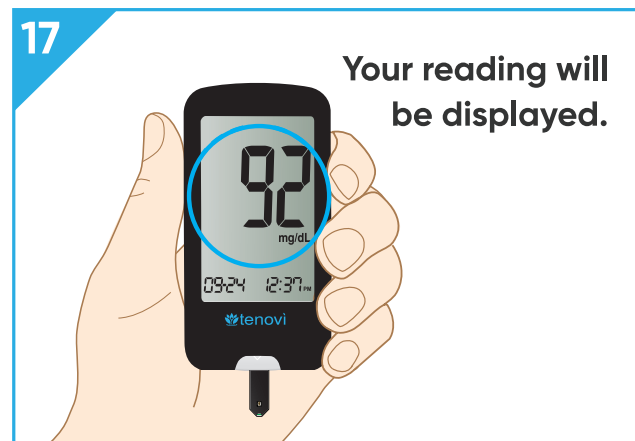
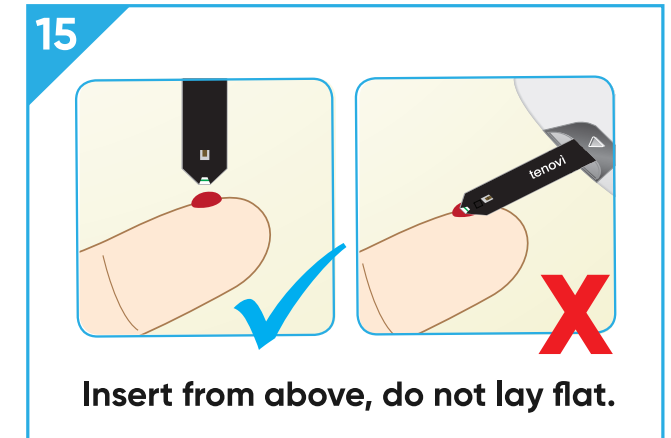
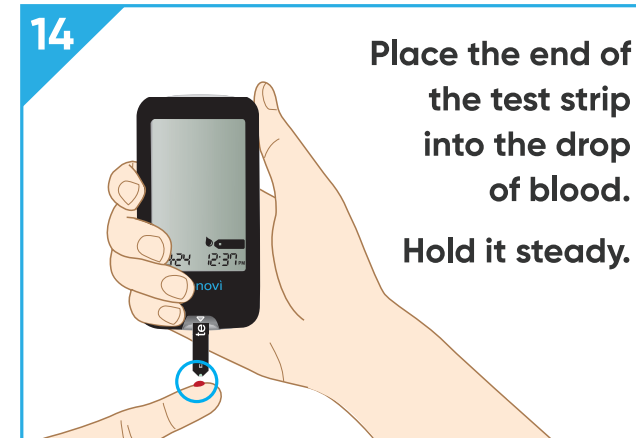
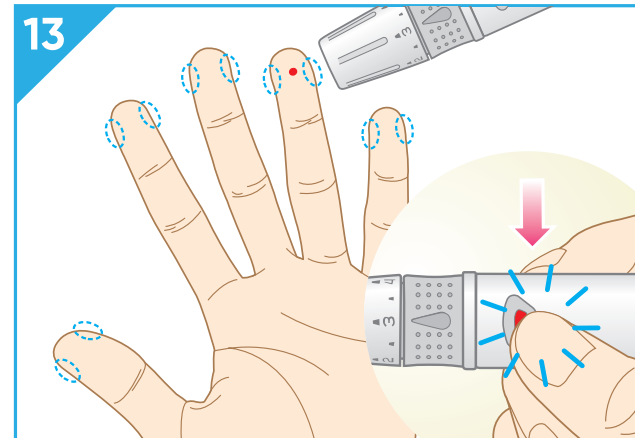
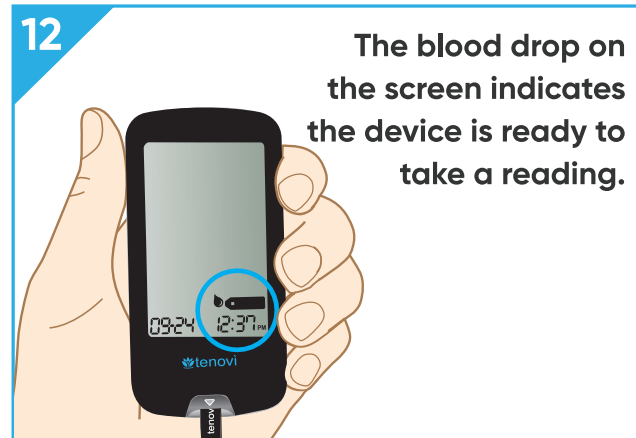


**tenovi**  
**Blood Glucose**  
**Monitoring System**  
Quick Start Guide

**1.** Plug your Gateway into a power outlet with the provided power cord and wait until the LED on the Gateway turns red.



# Blood Glucose Monitoring System – Quick Start Guide



## tenovi

© 2025 Tenovi Co.  
All rights reserved. Reproduction, duplication or modification  
in whole or in part is prohibited without prior written permission  
from Tenovi. All trademarks are owned by or licensed to  
Tenovi, Co. unless otherwise noted.  
Revision 05.01.2024