

For further assistance, please
visit [Tenovi.com/support](https://tenovi.com/support).

tenovi

© 2025 Tenovi Co.
All rights reserved. Republication, duplication or modification
in whole or in part is prohibited without prior written permission
from Tenovi. All trademarks are owned by or licensed to
Tenovi, Co. unless otherwise noted.
Revision 05.01.2024

1

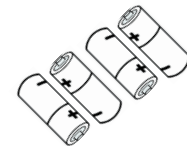
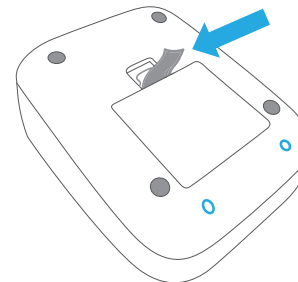
Power Your Gateway

Plug your Gateway into a power outlet with the provided power cord and wait until the LED on the Gateway turns **RED**.

**2**

Remove Pull Tab

Remove pull tab from the battery compartment to power on the device.

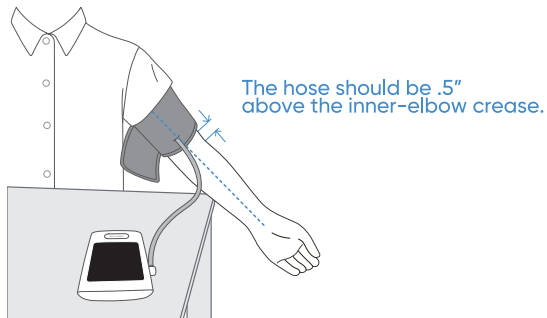


(4AA Batteries included)

3

Fasten The Cuff

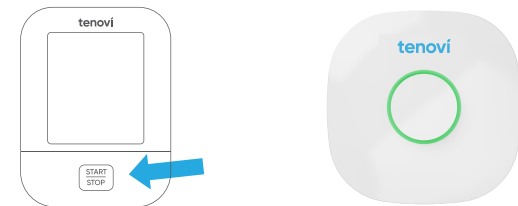
Fasten the cuff to your left upper arm directly on your skin. Leave **0.5 inches** between the cuff and your elbow joint. The hose should rest over your forearm.



5

Take A Measurement

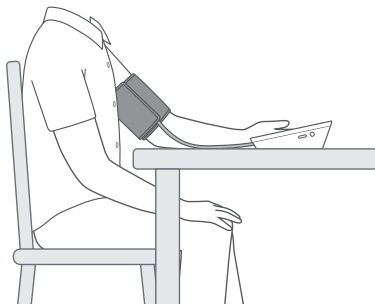
Press the "Start/Stop" button to take a measurement. After measurement has been displayed for 5 seconds, you may remove the cuff. If the LED ring is **GREEN**, you have properly taken a measurement for the day, and that measurement has been successfully transmitted.



4

Properly Set Up

Sit comfortably with your left arm **resting on the table** in front of you and your **palm facing up**. Do not cross your legs. **Sit quietly** and take **5-6 deep breaths**.



6

Daily Measurements

Take one measurement each day unless advised otherwise by your healthcare provider. The LED will turn **RED** each morning and then turn **GREEN** once a measurement has been successfully transmitted.



Measurement Needed

Measurement Successful