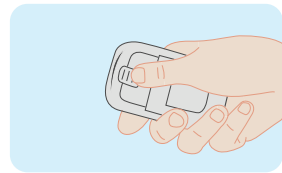
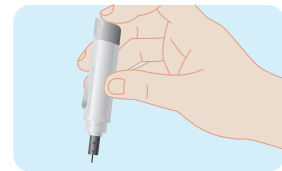


► Discard the Lancet & Test Strip

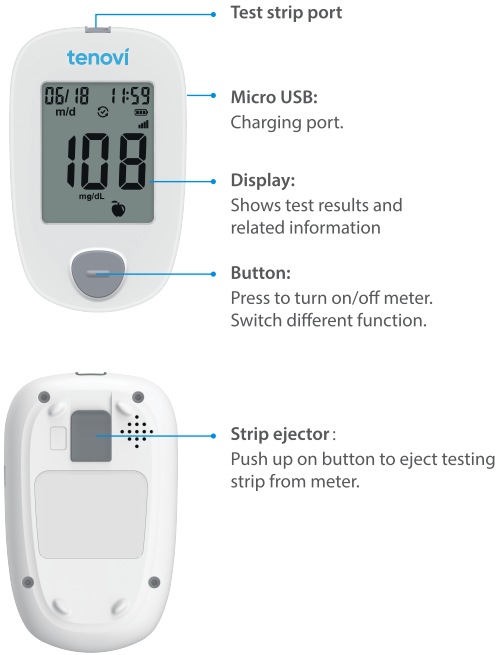
Eject the test strip using the strip ejector on the back of the device.



Unscrew the lancing device cover. Place the safety tab of the lancet on a hard surface and carefully insert the lancet needle into the safety tab. Pull the lancet out of the lancet holder and discard.



Tenovi Cellular Glucometer



Troubleshooting Guide (Please refer to your User Manual for complete troubleshooting and error information)

What It Means	
E 1	Blood or control solution was applied to the test strip before the flashing drop appeared on the display.
E 2	The meter is sensing a used or contaminated test strip.
E 3	Incorrect test strip.
E 4	Incorrect sample.
E 5	Temperature out of range.
E 6 E 7	Potential hardware error.
E 8	A test strip inserted while the meter was connected to a computer or wall outlet.
E 10	Insufficient sample.
E 11	Running out of battery.
⊗	Data not transmitted
⬆	No signal
HI	Test result is above 600 mg/dL.
LO	Test result is below 20 mg/dL.

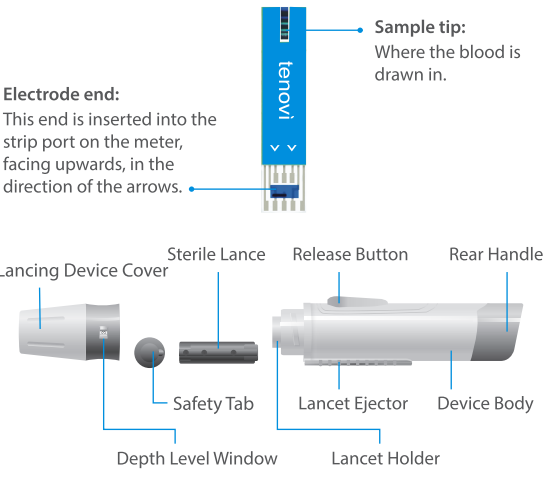
tenovi  
Cellular  
Glucose  
Meter

QUICK START GUIDE

Number:  
Effective date:  
  
Read your User Manual for complete instructions before performing a blood glucose test.  
For Single-patient use only. Do not share.

Made in China

► Test Strip and Lancing Device



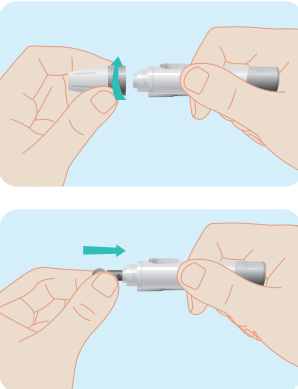
**Distributed by:**  
Tenovi Co.  
1 Cate Street, Ste 100 Portsmouth, NH 03801

**Customer Support at:**  
714-418-5658, Available from 9 am to 8 pm EST.  
For urgent matters, contact your health care professional.

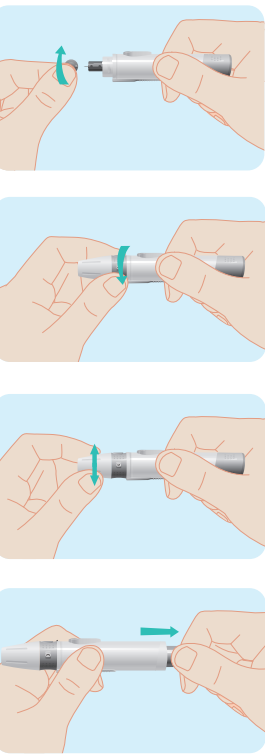
► Prepare the Lancing Device

**Important:**  
Prior to testing, wipe the test site with an alcohol swab or soapy water. Use warm water to increase blood flow if necessary. Then dry your hands and test site thoroughly.

1. Remove the Lancing device cover by holding and turning counterclockwise then pulling. Insert a lancet into the lancet holder by sliding the lancet into the holder until it snaps in place.



2. Twist the safety tab off the lancet. (Save the safety tab for lancet removal)
3. Carefully screw the Lancing device cover back onto the lancing device by reattaching and turning clockwise to tighten.
4. Hold the lancing device firmly and turn the Lancing device cover to adjust the lancet penetration depth. (Choose from setting 1 through 5 in the depth level window.)
5. Pull the rear handle back until it clicks to load the lancing device.

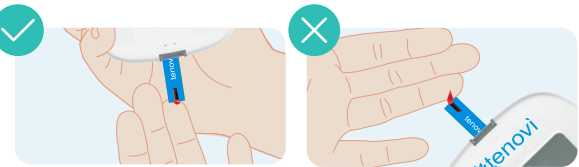


► Performing a Blood Glucose Test

1. Remove a test strip from the strip vial. Tightly close the vial cap immediately after you have removed the test strip.
2. Insert the test strip into the meter in the direction of the arrows. Meter turns on automatically.
3. A symbol with a flashing blood drop will appear letting you know the meter is ready to test.
4. Hold the lancing device against the side of a fingertip and press the release button to prick the skin and obtain a drop of blood.



5. Immediately touch the tip of the test strip to the drop of blood. The blood should be pulled into the test strip through the tip. Do not put blood on top of the test strip.



6. The meter counts down from 5 to 1 and then your test result is displayed and automatically stored in the meter memory.

