



For more information about your device, use your phone to scan the QR code above or visit our support site at tenovi.com/14

tenovi

© 2025 Tenovi Co.
All rights reserved. Reproduction, duplication or modification in whole or in part is prohibited without prior written permission from Tenovi. All trademarks are owned by or licensed to Tenovi, Co. unless otherwise noted.
Revision 11.28.2024

Power Your Gateway

1

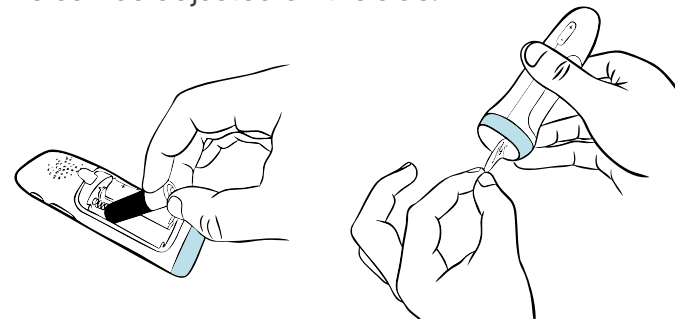
Plug your Gateway into a power outlet with the provided power cord and wait until the LED on the Gateway turns **RED**.



Install Batteries and Setup

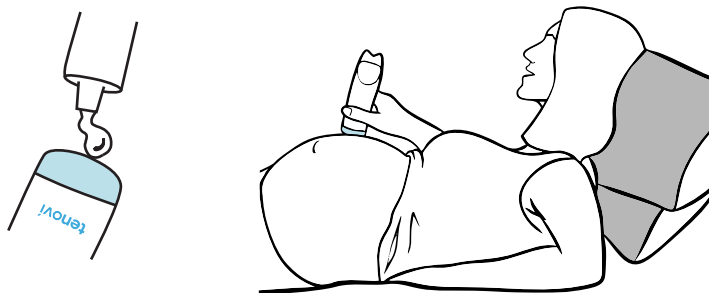
2

Install batteries and remove the protective film from the flat end of the device. Turn on the device by holding down the **power button for three seconds**. Volume can be adjusted on the side.

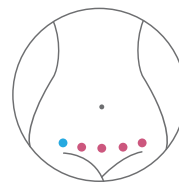


3 Position your body

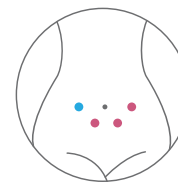
Lay back in a comfortable position on your bed with pillows behind your back. Cover the flat end of the device with a thin layer of Gel.



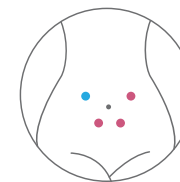
4 Place the device on your belly



16 - 24 Weeks



24 - 32 Weeks

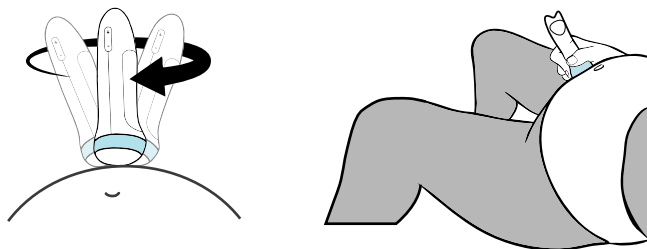


32 - 40 Weeks

Press the **flat end of the device** on the skin on the blue dot in the diagram. Apply enough pressure so the device maintains **full contact** with the belly.

5 Finding the baby's heart

Babies change positions. **Adjust the angle** until you hear the baby's heartbeat. If you aren't getting a good signal, **move to the next dot on the diagram** repeating the same hand motion until you hear the heartbeat loud and clear for a minimum of 6 seconds.



6 Transmitting the data

After getting a **clear audio signal**, the baby's heart-rate will be **transmitted to the Gateway and sent to your provider. Take a reading daily** unless advised otherwise by your healthcare provider. **The LED will turn RED at midnight and then turn GREEN once a measurement has been successfully transmitted.**



Measurement Needed



Measurement Successful