



For more information about your device,
use your phone to scan the QR code
above or visit our support site at
tenovi.com/06

tenovi

© 2026 Tenovi Co.
All rights reserved. Reproduction, duplication or modification
in whole or in part is prohibited without prior written permission
from Tenovi. All trademarks are owned by or licensed to
Tenovi, Co. unless otherwise noted.
Revision 06.11.26

1

Power Your Gateway

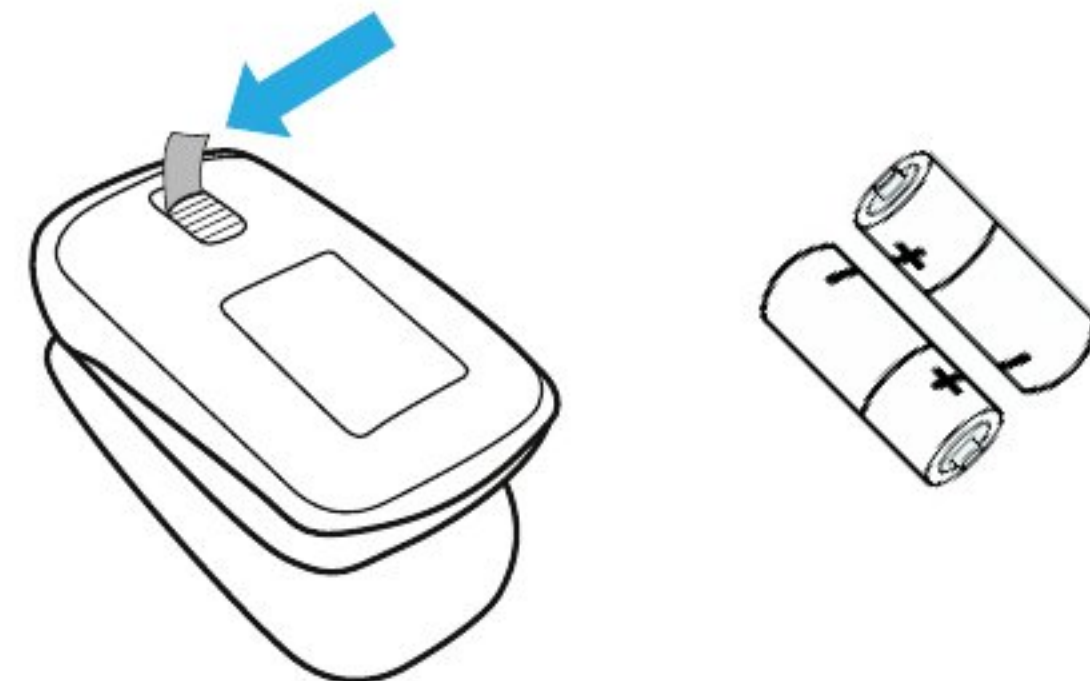
Plug your Gateway into a power outlet with the provided power cord and wait until the LED on the Gateway turns **RED**.



2

Remove Pull Tab

Remove **pull tab** from the battery compartment to power on the device.



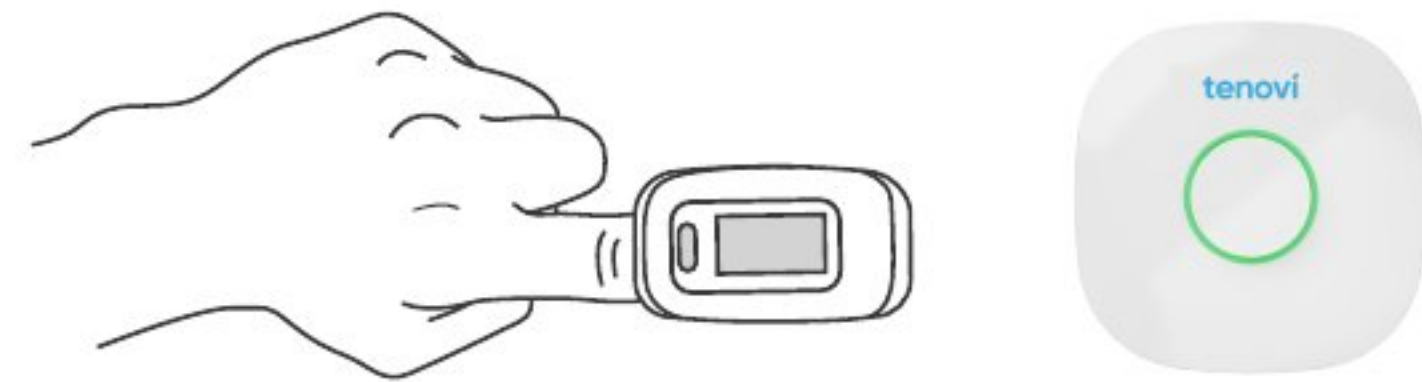
3 Insert Finger Into Pulse Ox

Insert **one finger** completely into the measurement section of the Oximeter with your **finger nail pointing up** towards the screen.



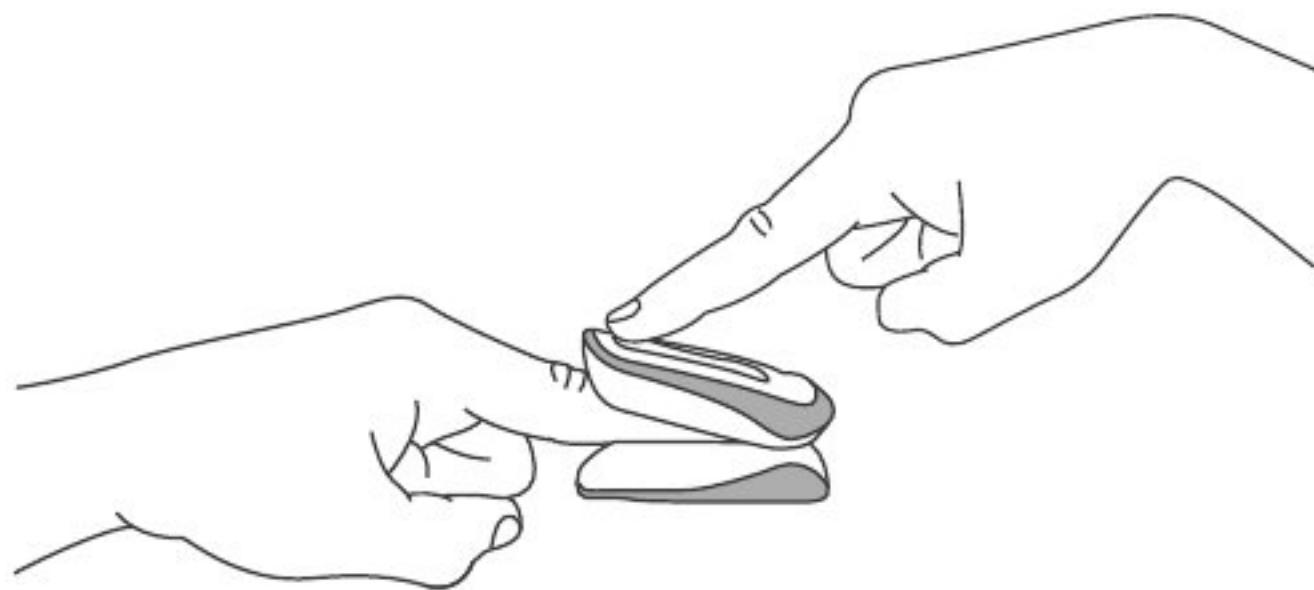
5 Wait 20 seconds

Keep your finger in the oximeter for **20 seconds** or until you hear a beep from the Tenovi Gateway. Then, **remove your finger** and wait for Tenovi Gateway to turn **GREEN**.



4 Press Power On Pulse OX

Stand within **20 feet** of the Tenovi Gateway and **press the power button** on the oximeter.



6 Daily Measurements

Take one measurement each day unless advised otherwise by your healthcare provider. The LED will turn **RED** at midnight and then turn **GREEN** and BEEP once your first measurement for the day has been successfully transmitted. **You can continue to take additional measurements and they will be transmitted to the Gateway, but the color will not change.**



Measurement Needed



Measurement Successful