



For more information about your device, use your phone to scan the QR code above or visit our support site at [tenovi.com/16](https://tenovi.com/16)

## Transmit Data to your Provider 7

**Every 6 hours**, the XK device will automatically connect to the Tenovi Gateway and transmit data to your provider. The LED will turn **RED** at midnight and switch to **GREEN** once a measurement has been successfully transmitted.



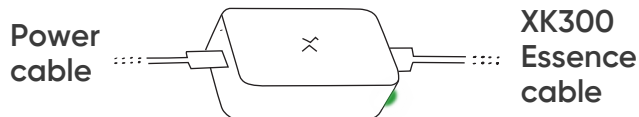
LED turns **red** at midnight



Measurement Successful

## LED Status Check 8

- |                           |                                     |
|---------------------------|-------------------------------------|
| ● Normal Operation        | > No issue                          |
| ○ Booting                 | > Wait a moment                     |
| ● Communication failed    | > Reconnect the power cable         |
| ● Cable Connection failed | > Reconnect the XK300 Essence cable |



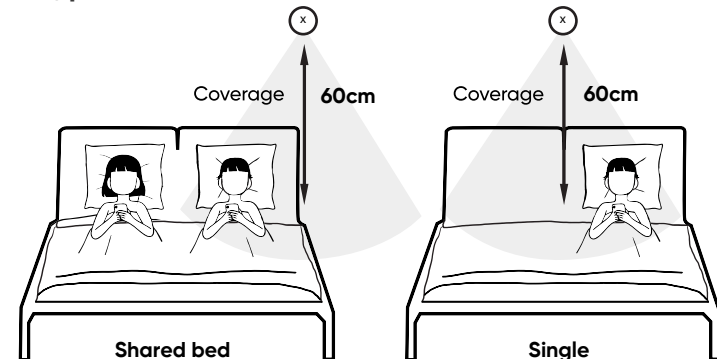
## Power Your Gateway 1

**Plug your Gateway into a power outlet** with the provided power cord and wait until the LED on the Gateway turns **RED**.



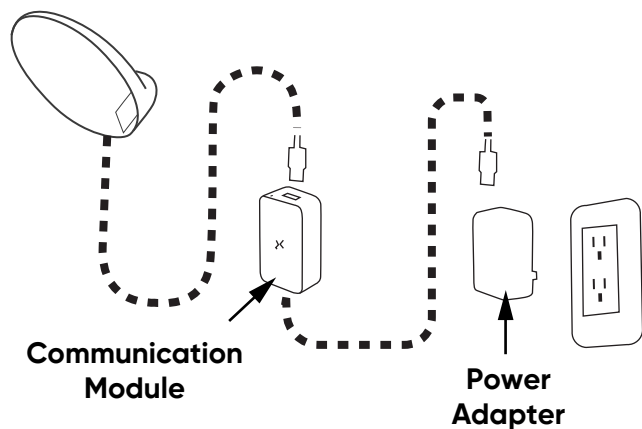
## Position your body 2

Using the measuring tape, **mark 60 centimeters above the mattress**. If you're sharing the bed, place the sensor near the edge on your side. If there's only one person in bed, **place the sensor at the center of the bed**.



## Reference Setup

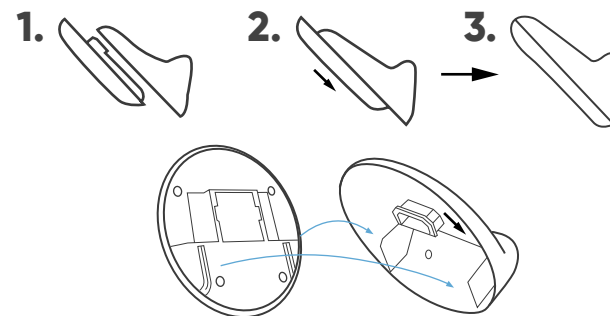
3



## Attach Sensor

4

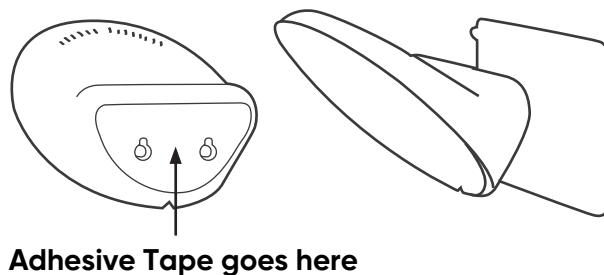
Align the top to the base and slide in the top to the base.



## Mark the Spot

5

Attach the wall protection film tape to the wall, stick the double-sided tape to the back of the sensor base, and then press the base firmly onto the film tape.



## Communication Module Mounting

6

Hang the module on the mount. Apply the square-sized double-sided tape to the back of the mount. Attach the Wall Protection Film Tape to the wall, then press the mount firmly onto it.

