

For further assistance on how to
use your Tenovi device,
please contact a Tenovi representative
at:

Phone: (714) 418-5658

**Email:
support@tenovi.com**

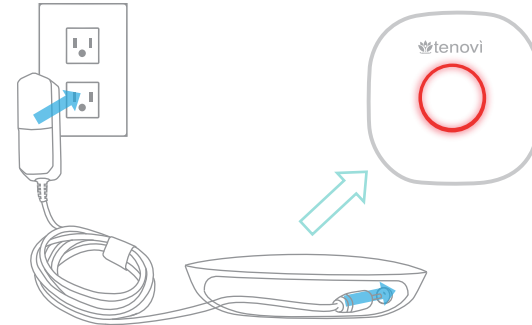


© 2021 Tenovi Co.

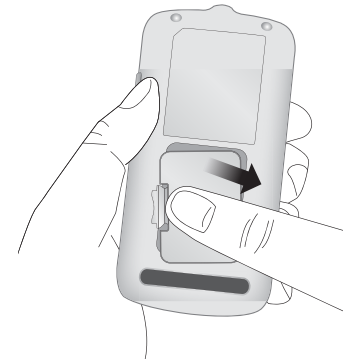
All rights reserved. Reproduction, duplication or modification
in whole or in part is prohibited without prior written permission
from Tenovi. All trademarks are owned by or licensed to
Tenovi, Co. unless otherwise noted.

Revision 05.01.2021

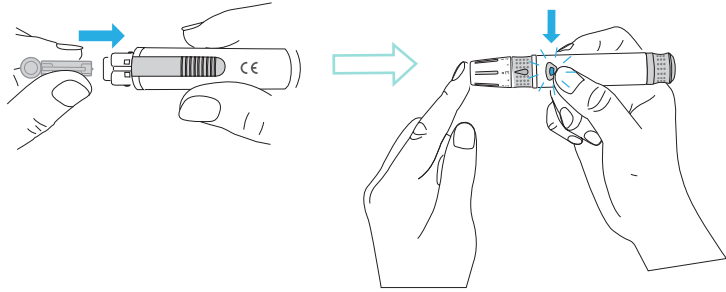
- 1** Plug your gateway into a power outlet with the provided power cord and wait until the LED on the gateway turns red.



- 2** Push the cover in the direction of the arrow to open the battery compartment and insert the batteries



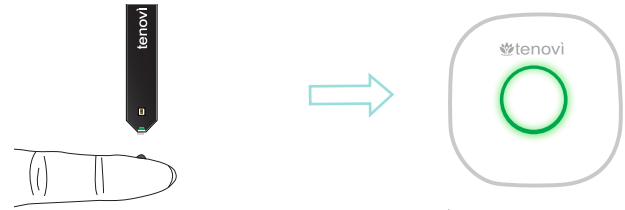
- 3** Insert a new disposable lancet firmly into the lancet holder and take a blood sample



- 4** Insert a test strip with the contact bars facing upwards into the meter's test strip port.



- 5** Apply the blood sample to the narrow end of the test strip. When the measurement concludes, the results are shown on the display. If the LED ring is Green, you have properly taken a measurement for the day and that measurement has been successfully transmitted.



- 6** **Take one measurement once per day unless otherwise advised by your healthcare provider.** The LED on your Tenovi device will turn **Red** at the beginning of each day indicating you must take measurement for that day. The LED ring will turn **Green** when you successfully take a measurement and transmit it to your healthcare provider.



Measurement Needed



Measurement Successful