

For further assistance on how to  
use your Tenovi device,  
please contact a Tenovi representative  
at:

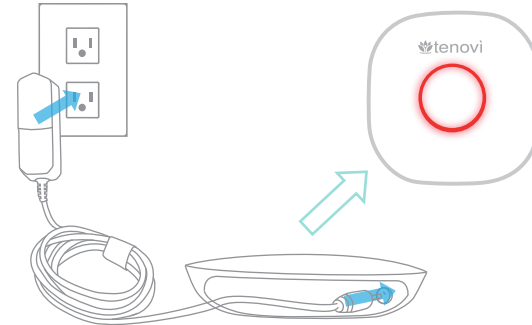
**Phone: (714) 418-5658**

**Email:  
support@tenovi.com**

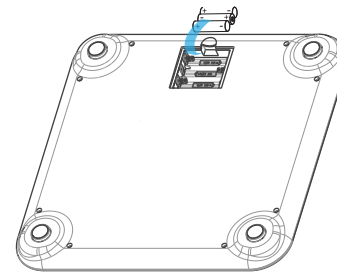


© 2021 Tenovi Co.  
All rights reserved. Reproduction, duplication or modification  
in whole or in part is prohibited without prior written permission  
from Tenovi. All trademarks are owned by or licensed to  
Tenovi, Co. unless otherwise noted.  
Revision 05.01.2021

- 1** Plug your gateway into a power outlet with the provided power cord and wait until the LED on the gateway turns red.

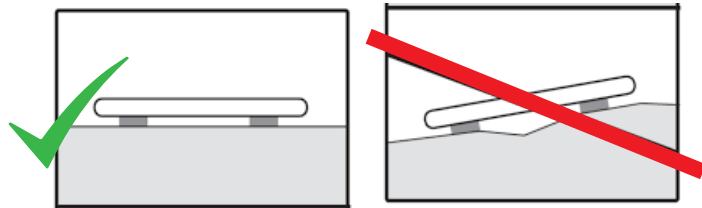


- 2** Insert the three batteries into the back of your scale.



3

Place the scale on a hard, even surface. Avoid using the device on carpet.



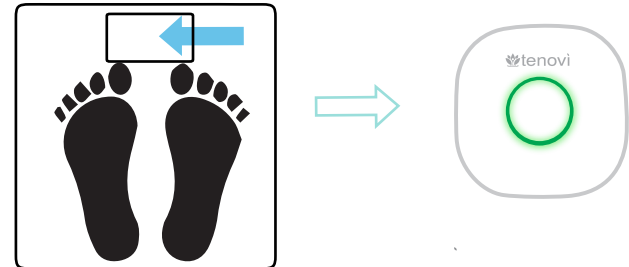
4

Step on the glass platform and remain still. Wait for the device to power on and perform the measurement.



5

When the measurement concludes, the results are shown on the display. If the LED ring is Green, you have properly taken a measurement for the day and that measurement has been successfully transmitted.



6

**Take one measurement once per day unless otherwise advised by your healthcare provider.** The LED on your Tenovi device will turn **Red** at the beginning of each day indicating you must take measurement for that day. The LED ring will turn **Green** when you successfully take a measurement and transmit it to your healthcare provider.



Measurement Needed



Measurement Successful