

A&D Blood Pressure Monitor

Quick Start Guide

7

Daily measurements

Take one measurement each day unless advised otherwise by your healthcare provider. The LED will turn **red** each morning and then turn **green** once a measurement has been successfully transmitted.



Measurement Needed



Measurement Successful

For further assistance on how to use your Tenovi device, please contact a Tenovi representative

Email: support@tenovi.com



© 2024 Tenovi Co.

All rights reserved. Reproduction, duplication or modification in whole or in part is prohibited without prior written permission from Tenovi. All trademarks are owned by or licensed to Tenovi, Co. unless otherwise noted.
Revision 05.01.2024

1

Power your Gateway

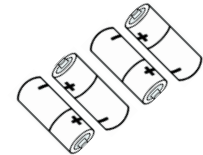
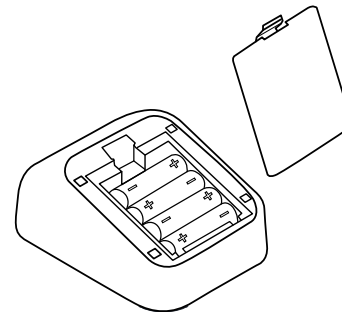
Plug your Gateway into a power outlet with the provided power cord and wait until the LED on the gateway turns **red**.



2

Insert BPM batteries

Insert the four batteries into the back of your blood pressure monitor and connect the cuff into the port on the left side of the monitor.

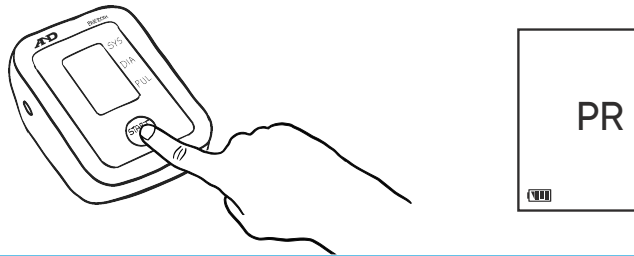


(4AA Batteries included)

3

Pairing your BPM & Gateway

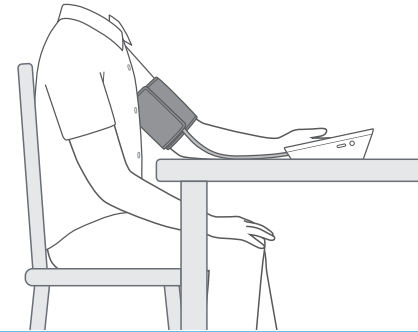
Press and hold the "START" button until "Pr" is displayed. The gateway should flash **yellow** and beep after 5 seconds. Your device will display "Set" when completed properly. This pairing process only needs to be completed once.



5

Properly set up

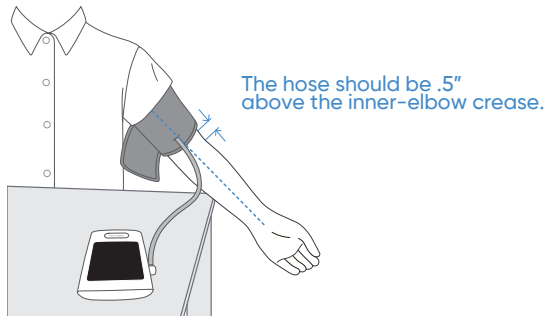
Sit comfortably with your left arm resting on the table in front of you and your **palm facing up**. **Do not cross your legs**. Sit quietly and take 5-6 deep breaths.



4

Fasten the cuff

Fasten the **cuff** to your left upper arm directly on your skin. **Leave 0.5 inches** between the cuff and your elbow joint. The air tube should rest over your forearm.



6

Take a measurement

Press the "Start/Stop" button to take a measurement. Wait for the screen to turn off before removing the cuff. If the LED ring is **green**, you have properly taken a measurement for the day, and that measurement has been successfully transmitted.

