

Trividia Blood Glucose Meter

Quick Start Guide

For further assistance on how to use your Tenovi device, please contact a Tenovi representative

Phone: 714.418.5658
Email: support@tenovi.com



© 2024 Tenovi Co.
All rights reserved. Republication, duplication or modification in whole or in part is prohibited without prior written permission from Tenovi. All trademarks are owned by or licensed to Tenovi, Co. unless otherwise noted.
Revision 05.01.2024

1

Power your Gateway

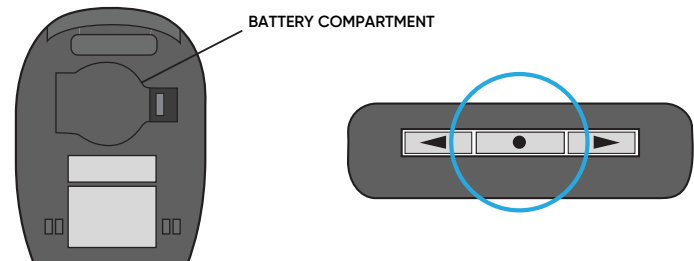
Plug your Gateway into a power outlet with the provided power cord and wait until the LED on the gateway turns **red**.



2

Insert Batteries

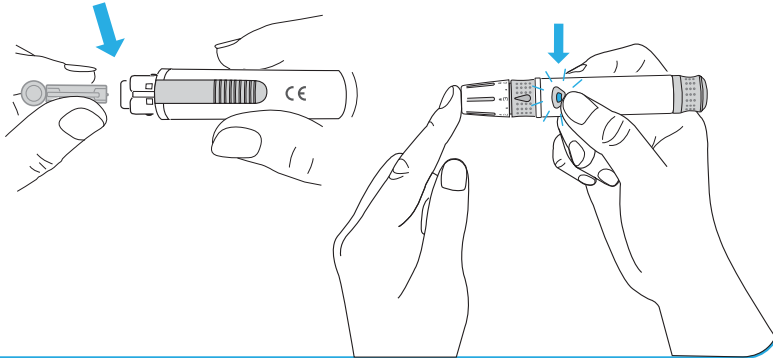
Insert batteries into the back of the glucometer. **Stand within 10 feet** of the gateway and **press the top button** on the glucometer. The gateway will beep indicating that it has connected successfully to the glucometer.



3

Take A Sample

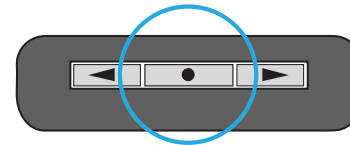
Insert a new disposable lancet firmly into the lancet holder and take a blood sample



5

Transmit Readings

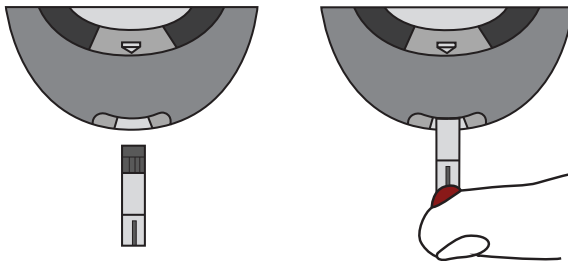
Remove the test strip and the screen will turn off. **Stand within 10 feet** of the gateway and press the power button on top of the glucometer to transmit the reading to the gateway. You can take readings while away from the gateway. **Press this button** the next time you are close to your gateway to transmit all of your readings.



4

Insert Test Strip

Insert a test strip with the contact bars facing upwards into the meter's test strip port. Apply the blood sample to the end of the test strip. When the measurement concludes, the results are shown on the display.



6

Daily Measurements

Take one measurement each day unless advised otherwise by your healthcare provider. The LED will turn **red** each morning and then turn **green** once a measurement has been successfully transmitted.



Measurement Needed



Measurement Successful